



Actual size

# MARKING X PRINTER



■ Champagne Gold



■ Dark Gold



■ Wine Red



■ Silver



■ Gunmetal



■ Black

**M** MarkinBOX  
Sensible Solutions For Direct Part Marking

fresh new way of Direct Part Marking  
with Electric Pin Technology.



The MarkinBox Pin Marker is highly useful for both Industrial and General Purpose marking, and can be applied to a variety of materials such as Paper, Plastic, and Metals.

## For General Purpose

On scissors



On kitchen knives  
(\*Kanji created by using a font)



For personal items



For common used Hand Tools



Personalized Messages



For promotion items or commemorative gifts



## For Industrial Purposes

On hardened materials  
(HRC60 or equivalent)



On die cast aluminum



Ease Of Use - Anywhere...

MarkinBOX's concept lets anyone use it to mark easily and fuss free.



### What is Required

From left to right, A Windows PC or LapTop\*1, MarkinBOX controller and MB 3315 Marking Head

\*1 Lap Top shown is optional.



**Compact, Light-weight, and completely electric.**  
**Use it easily at an office, factory, or anywhere else.**



### MB 3315 can be used in the field or office

Being compact and Light-weight, the MB 3315 can be positioned for marking anywhere, at any angle.



**With USB connection, there is no need for a PC.**

(Data can be stored in the controller memory, which allows the MarkinBOX to operate even when the PC is disconnected).



Easy operation via PC



Simple USB connection



MarkinBOX software is able to mark a Data Matrix or QR code. It can meet your traceability needs.



**2D Data Matrix Code**  
(2 Dimensional Code)

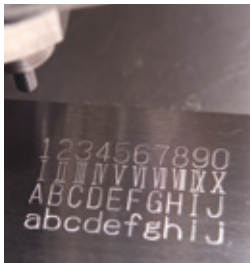


**QR Code**  
(2 Dimensional Code)



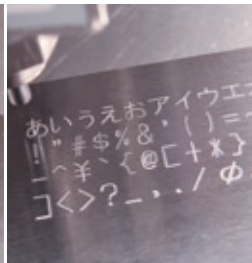
You can mark Alphabets, Numbers, Hiragana, Katakana\*<sup>2</sup>, and Logos\*<sup>3</sup> using the software supplied with MarkinBOX.

\*<sup>2</sup> Alphabet, Numbers, Hiragana, and Katakana shown with original Tocho Font. \*<sup>3</sup> Able to use the MarkinBox software with in-built Logo software.



**Sample of the Tocho font**

Arabic/Roman numerals,  
upper/lower case  
alphabets

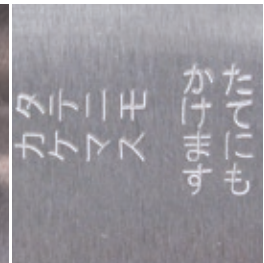


Hiragana, katakana,  
symbols



**Logos**

Symbols or logos



**Tower and Chimney Printing**

Vertical Print of Characters on X axis  
Vertical Print of Characters on Y axis



MarkinBox 3315 can be used as a Portable/Handheld marker, or Integrated into Machines/Equipment or Bench Mounted (option).



**Standard model**  
For Portable use



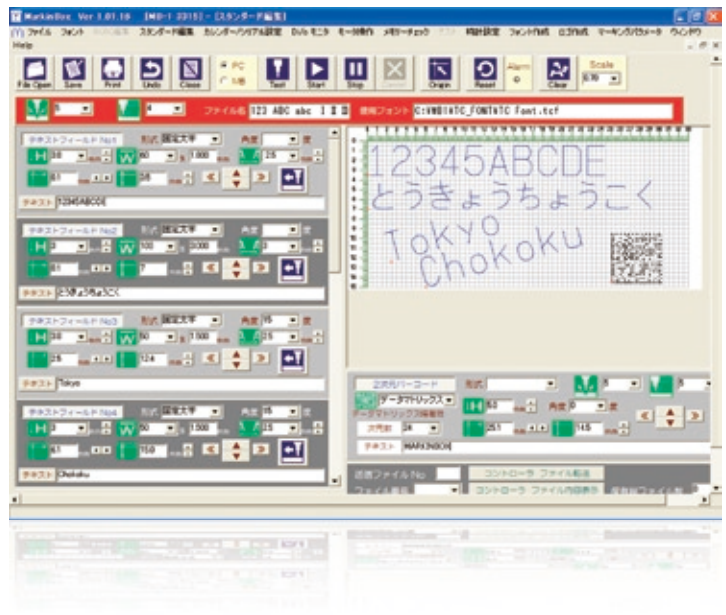
**Stand type (optional)**  
Height-adjustable stand, light-weight  
(about 3.7 kg)

## Operation of MarkinBOX from Windows PC

MarkinBox Software is Windows based and allows the user to achieve What you See is What You Get.

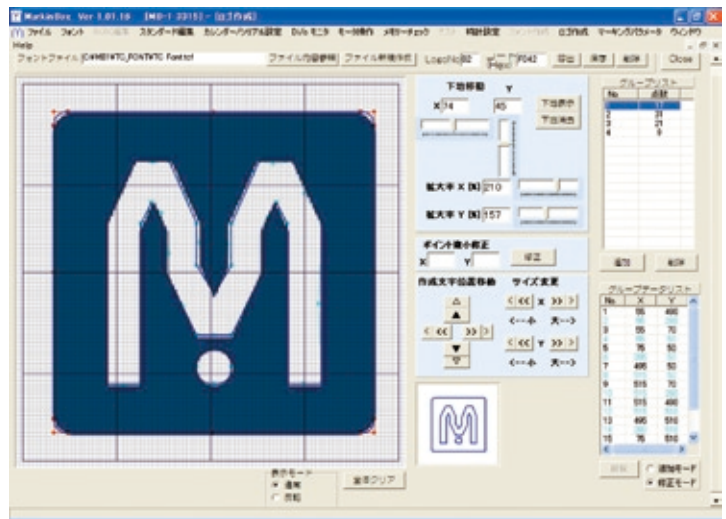
### Easy or Standard Edit Screen

With Easy Editing, it allows for quick marking in a few steps, and with Standard Editing, the user is able to use all the advanced functions. The Standard Editing window allows you to mark standard characters, logos, two-dimensional barcodes and automatically set calendar dates or serial numbers such as 001 through 999.



### Logo Creation Screen

It's easy to create and store a logo by displaying a basic design as a jpeg or bmp image and transforming (tracing) it into marking data. You can also create new fonts with ease.



### Production of MarkinBOX

MarkinBOX is manufactured in Shenzhen, China. Our assembly facility is located within a Japanese Techno Center supported by Japanese staff and vendors for Quality Control. All key components are manufactured in Japan.



