

Nozzles

Single/Multi-Orifice, 90-Degree, 90-Degree Multi-Orifice

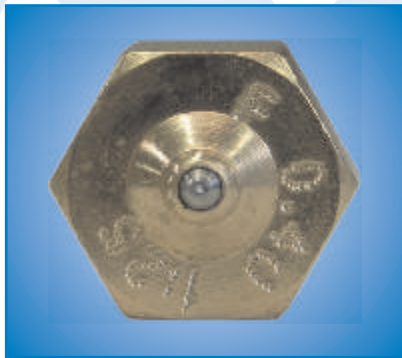
Application the way you want it.

Valco Melton manufactures a large variety of **MELTON** nozzles for adhesive applications. Single orifice, multi-orifice, 90-degree, 90-degree multi-orifice are some of the most common types.

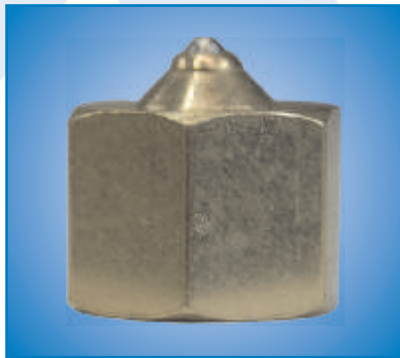
All Valco Melton nozzles are machined from a brass body and have a stainless insert. These inserts are formed from medical grade polished capillary tubes which provides the highest quality channel from which the adhesive can be extruded. These nozzles will provide a straight, consistent and accurate adhesive bead. All Valco Melton nozzles have a 3/8-24 female thread. The 90-degree nozzles are constructed of a brass housing, steel retaining nut, and stainless steel nozzle insert.

Melton® Nozzles Feature:

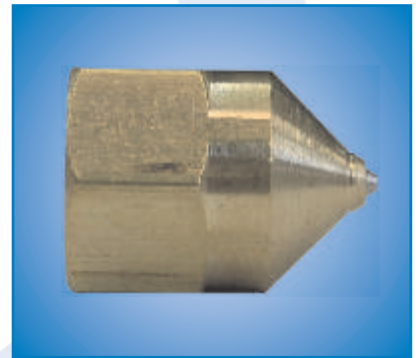
- Medical Grade Capillary Tube nozzle inserts supply the best possible adhesive flow and pattern.
- Brass housing provides optimal heat transfer throughout nozzle.
- Crimping method used in assembly provides greater uniformity and consistency.



Insert



Short
Engagement



Long
Engagement



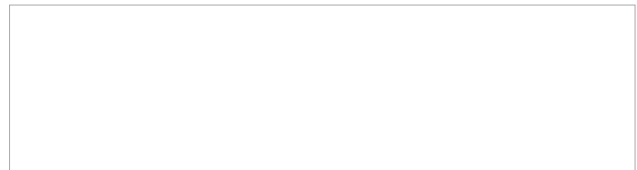
Dual Orifice 90°
(15° Spread)



Dome Multi
Orifice Nozzle



Single
Orifice 90°



For more information visit www.valcomelton.com, or contact your local representative.

World Headquarters: USA, Cincinnati, Ohio (Corporate Offices) • Tel: 513.874.6550 • Fax: 513.874.3612 • info@meltonhotmelt.com

European Headquarters: Spain, Navarra • Tel: +34.948.321.580 • Fax: +34 948 326 584 • melton@melton.es

Asian Headquarters: China, Xiamen, Fujian • Tel: +86.592.591.7854 • Fax: +86.592.591.7834 • china@valcomelton.com

www.valcomelton.com • Serving Over 52 Countries Worldwide.

