

Introducing Leibinger's latest attraction—the **NEW**

JET3 **UP**

- **NEW Name**
- **NEW Software Design**
- **NEW Functions**
- **NEW Printhead Options**

Equipped with many new functions, an even better interface design and state-of-the-art inkjet technology, this printer will replace the LEIBINGER JET3, which has been very successful in the market for years.

The **JET3^{UP}** models:

JET3^{UP} • **JET3^{UP} mi** • **JET3^{UP} pro** • **JET3^{UP} pi**



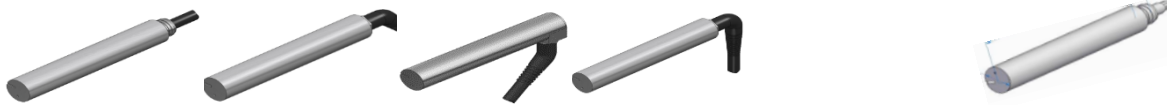
The printhead options:

SK4 – current JET3 heads

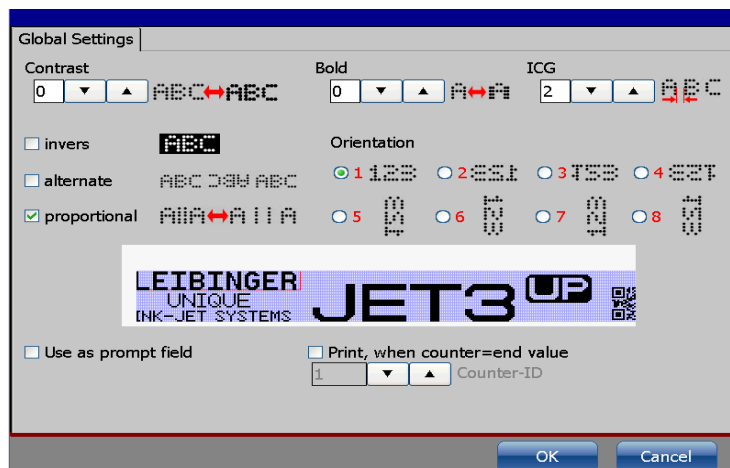
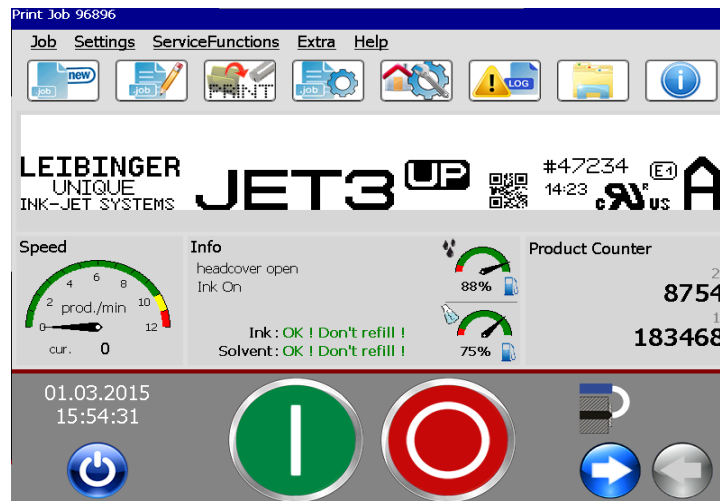
- 3m, 6m, 10m
- 4 options for the umbilical exit
- Pigmented and not pigmented
- 35µ, 40µ, 50µ, 60µ, 70µ
- IP65

SK6 – current NEO head

- 3m, 6m, 10m
- straight exit
- not pigmented, not IP65
- 50µ, 60µ, 70µ



The NEW Software Design
NEW graphics for home screen, editing, and many more!



28 NEW Functions (Now over 800 functions in the **JET3^{UP}** !)

| No: | Function |
|------------|--|
| 1 | Operating speed of EDITOR increased |
| 2 | outlook / general design of the user software improved |
| 3 | Illustrated warning- and error messages |
| 4 | Contact details of the dealer can be entered to the software |
| 5 | Nozzle will close during production interruptions => reduces solvent consumption |
| 6 | Interface protocol converter from LJ2se => JET3up |
| 7 | PrintGo-signals will be registered to a FIFO memory |
| 8 | Improved print quality |
| 9 | Icon (Short-Cut) selection |
| 10 | Variable PrintGo-delays for the forward and backward movement on traversing systems |
| 11 | "real time level detection" and information display of the reservoir tanks |
| 12 | Information display for "remaining print outs" |
| 13 | Instead of an encoder, the speed of the production can be measured "online" if using a second sensor |
| 14 | It is possible to detect a "product jam" on the conveyor (sensor measures the "product run-time") |
| 15 | Another product tracing / control is the possibility to detect a toppled product (by measuring the run-time of the sensor signal) |
| 16 | The information of "max. speed" and "amount of drops for the current print-out" is already displayed inside the editor (not just on the production screen) |
| 17 | Further "log file" for the "production history" is available |
| 18 | Network access for print-data |
| 19 | For "IP65" printers there is a monitoring of the "plant air" supply |
| 20 | "Automatic checksum control" during entering the data |
| 21 | "auto-start function" extended |
| 22 | A "total DROP counter" is implemented |
| 23 | The service interval has to be reset with a special "Service TAG" |
| 24 | With only one "click" on the touch screen the display of the "m/min" can be switched to the format "products/min" (or "feet/min") |
| 25 | The "info file" and the "log file" will be always saved automatically together and besides with the additional language English |
| 26 | For 6 different events, the status of the message can be defined as: "info", "warning" or an "error" message |
| 27 | "online edit function" for job-lists implemented |
| 28 | "Remote Access via VNC" as a free standard function |



Remote Access via VNC – FREE !
Complete printer control

Connect from

- PC
- Laptop
- Tablet
- Smartphone



TENTATIVE release schedule:

June 2015 – pricing will be released along with sales brochure (6 page)

July 2015 - orders will be accepted

August 2015 – production & shipping begins

LEIBINGER: Making excellent products even better – every day!!